

The image features a top-down view of interlocking concrete paving stones in a greyish-tan color, set on a bed of dark gravel. A bright yellow-green tennis ball is placed on one of the stones. The entire scene is framed by a white, angular border that follows the shape of the paving stones. In the top right corner, the company logo is displayed. The logo consists of a stylized 'CC' symbol in black and orange, followed by the word 'ASIAN' in large, bold, black letters. Below this, the word 'CONCRETO' is written in orange, and the tagline 'BEAUTIFY YOUR WAY' is in smaller, black, uppercase letters.

**CC ASIAN**  
**CONCRETO**  
BEAUTIFY YOUR WAY

**ASIAN**

**BEHATON I**

I Paving Stone

# ASIAN BEHATON I

## I Paving Stone

### Interlocking. Heavy-Duty. Hassle-Free.

I Paving Stone from Asian Concrete is best used in extreme conditions for its great strength and stability. I Paving Stone's structural shape contributes to tremendous interlocking strength and superlative resistance to wear and mechanical damage, making it an ideal paving solution for areas that bear heavy-duty vehicular traffic. It provides hassle-free solutions irrespective of terrains and environments.

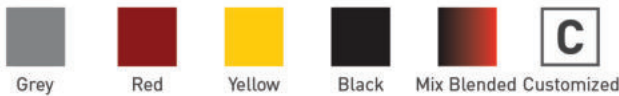
#### Advantages:

- Cost-effective, less time-consuming
- Easy, year round installation
- Simple and reusable
- Quick installation

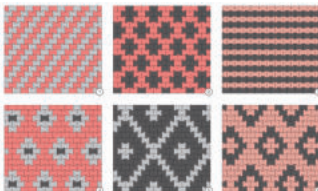
#### Where to be used:

Walkways | Parking Areas | Driveways | Rural and Community Roads  
Large Scale Industrial Areas | Heavy Traffic Load Bearing Areas

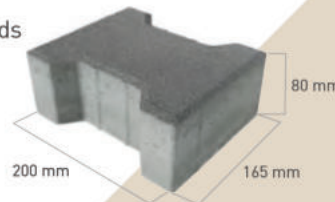
#### Colour Range:



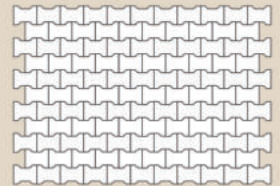
#### Patterns:



#### Load Factor:



#### Laying Patterns:



#### Specifications:

Parameters	Dimensions
Length (mm)	200
Width (mm)	165
Thickness (mm)	50 / 80
Pavers/m <sup>2</sup>	36.23
Pavers/ft <sup>2</sup>	3.37
Compressive Strength (N/mm <sup>2</sup> )	≥ 40 / ≥ 50

ASIAN CONCRETO PVT. LTD.



INDIA SALES OFFICE:  
Plot No. 84, Palm  
Paradise, Ramgarh Taal,  
Gorakhpur, UP, India  
Phone: +91-8127585858

NEPAL SALES OFFICE:  
1st Floor, ShriPri Home,  
Kalikasthan - 29,  
Kathmandu, Nepal  
Phone: +977-9802711199

FACTORY:  
Ramgram - 16  
Nawalparasi, Nepal.  
Phone: +977-9802711199

Email: [info@asianconcreto.com](mailto:info@asianconcreto.com)  
Website: [www.asianconcreto.com](http://www.asianconcreto.com)  
Follow us on [f](#) [i](#) [y](#) [in](#)  
Asian Concrete Pvt. Ltd.